

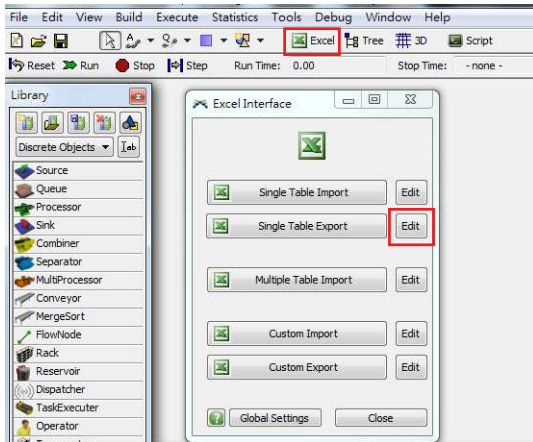
# Export and Import data Between FlexSim and MSExcel

W. M. Song 桑慧敏  
Tsing Hua Univ. 清華大學

2015.12.09

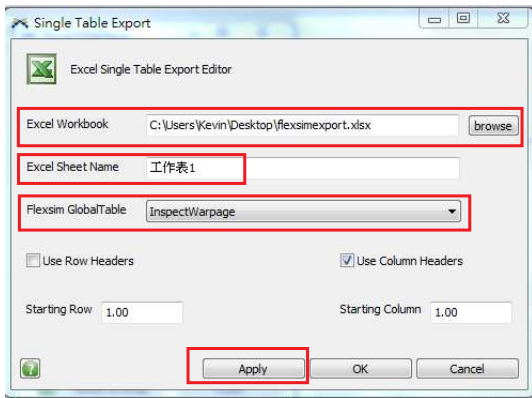
# Export to Excel

- Open the Excel Interface → Single Table Export [Edit](#)



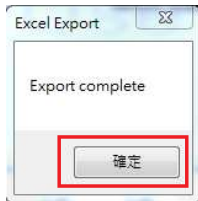
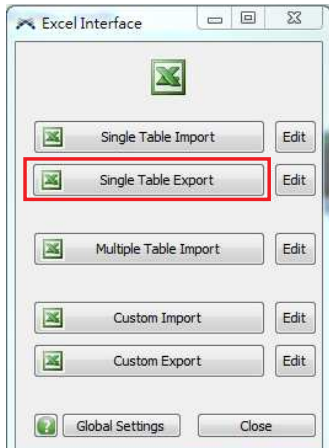
# Export to Excel -Setting

- 選取要將哪個 Global Table 匯出至哪個 Excel File 及工作表名稱



# Export to Excel

- Press Single Table Export
- 完成後會出現 Export complete 訊息



# Export to Excel

Global Table - InspectWarpage

Name: InspectWarpage Rows: 10.00 Columns: 1000.00  Clear on Reset

	InspectRound1	Col 2	Col 3	Col 4	Col 5	Col 6	Col 7	Col 8	Col 9	Col 10	Col 11
Row 1	-0.09	0.07	0.20	-0.01	-0.15	0.03	-0.05	0.02	-0.00	0.01	-0.01
Row 2	-0.19	-0.01	0.01	0.03	0.07	0.06	0.08	-0.05	0.14	-0.08	0.08
Row 3	-0.11	0.01	-0.04	-0.16	0.04	-0.17	0.03	-0.13	-0.08	-0.12	0.06
Row 4	-0.03	0.04	-0.03	0.28	0.25	0.00	0.07	-0.11	0.05	0.05	-0.01
Row 5	0.01	-0.12	0.04	-0.01	-0.23	-0.04	0.03	-0.08	-0.14	0.04	-0.03
Row 6	-0.02	0.04	0.05	-0.04	0.19	0.05	0.13	-0.03	-0.14	0.10	0.04
Row 7	0.08	-0.08	-0.25	-0.06	0.13	0.10	-0.08	-0.05	0.05	-0.01	-0.01
Row 8	-0.01	-0.13	-0.02	0.03	0.11	0.13	-0.05	0.08	-0.07	-0.01	0.08
Row 9	-0.03	-0.07	0.08	-0.12	-0.12	-0.03	0.13	-0.17	0.05	0.04	-0.03
Row 10	0.08	0.09	-0.04	0.16	-0.02	0.11	0.07	-0.03	0.08	-0.11	0.14

fleximexport.xlsx - Excel

檔案 常用 插入 版面配置 公式 資料 校閱 檢視

C15

	A	B	C	D	E	F	G	H	I	J	K	L
1	InspectRou	Col 2	Col 3	Col 4	Col 5	Col 6	Col 7	Col 8	Col 9	Col 10	Col 11	Col 12
2	-0.09193	0.066609	0.200918	-0.00526	-0.14952	0.029829	-0.04768	0.016601	-0.00309	0.01281	-0.01362	-0.12052
3	0.192461	-0.01259	0.012629	0.027621	0.073794	0.063416	0.07954	-0.05056	0.141644	-0.08253	0.08352	0.16009
4	-0.10951	0.005444	-0.04131	-0.1607	0.038157	-0.16733	0.025214	-0.13337	-0.07688	-0.11654	0.05912	-0.07722
5	-0.02973	0.03981	-0.03474	0.282703	0.248883	0.002424	0.073573	-0.11412	0.054748	0.052049	-0.00526	1.59E-05
6	0.012566	-0.12199	0.035353	-0.00625	-0.23489	-0.03564	0.034774	-0.07811	-0.13526	0.037371	-0.03194	-0.13812
7	-0.01969	0.042119	0.049444	-0.04478	0.193628	0.052994	0.127554	-0.02962	-0.14421	0.098411	0.039228	-0.03216
8	0.082495	-0.07779	-0.25481	-0.06247	0.126643	0.103077	-0.08126	-0.0457	0.052198	-0.00787	-0.00621	-0.04642
9	-0.01282	-0.12962	-0.01894	0.02569	0.114364	0.133798	-0.04951	0.080273	-0.06896	-0.00549	0.080926	0.056688
10	-0.02954	-0.07402	0.07747	-0.12402	-0.12358	-0.03407	0.130727	-0.17489	0.053743	0.036774	-0.03498	0.000619
11	0.078099	0.089916	-0.04441	0.158224	-0.01998	0.111651	0.067884	-0.03472	0.079128	-0.10545	0.140256	-0.07923