

Adapted from Short, 2000

Fig. 1. General schematic of *Macrobrachium* showing main appendages. Abbreviated terms in lower right

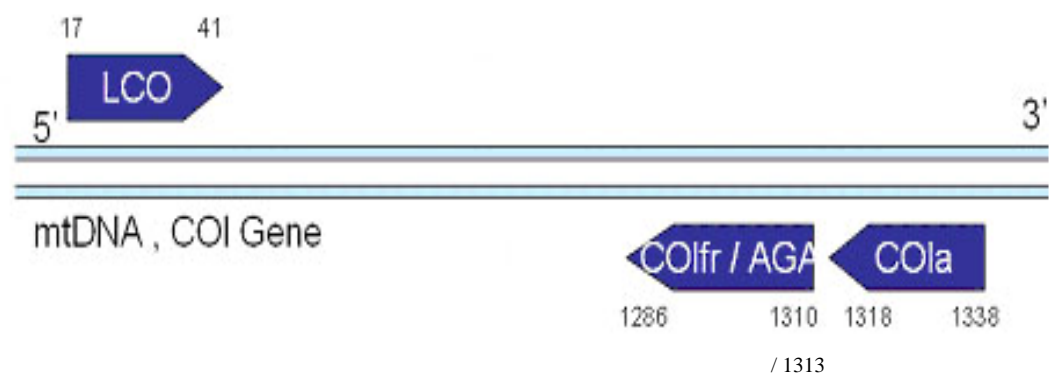


Fig. 2. Primer binding sites to positions on COI gene (numbered). Arrows indicate direction of amplification. Positions located from GenBank sequence of complete mitochondrial genome of *M. rosenbergii* accession number AY659990.

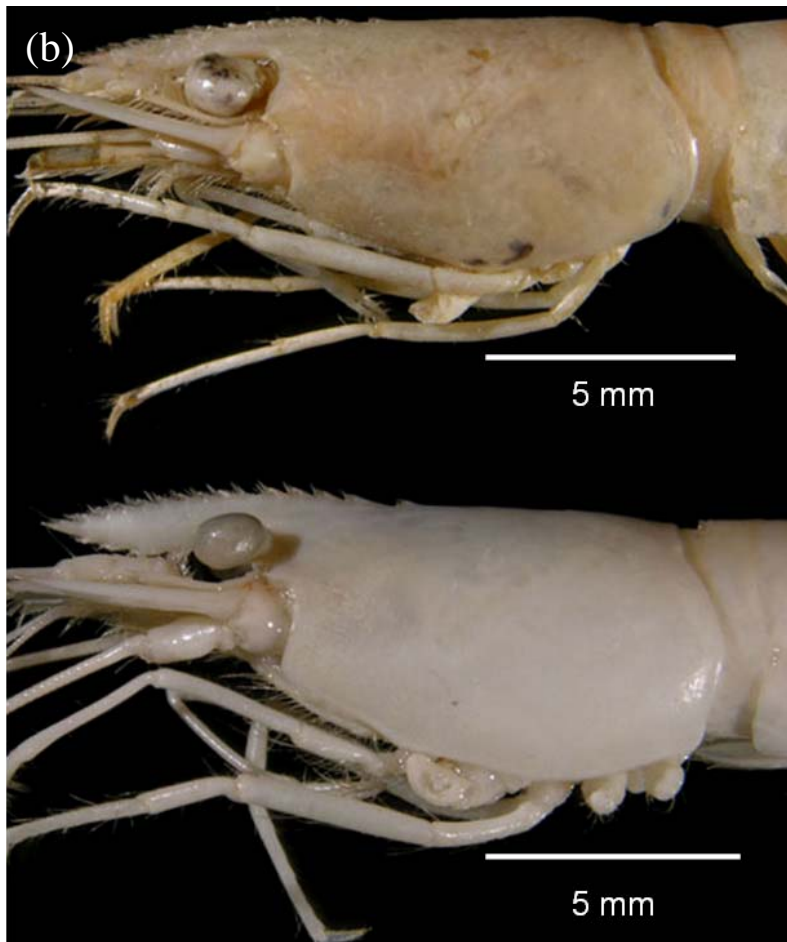


Fig. 3. (a) Full view
M. latidactylus (Top)
Macrobrachium sp. nov.
 (bottom)
 (b) Cephalothorax
M. latidactylus (Top)
Macrobrachium sp. nov.

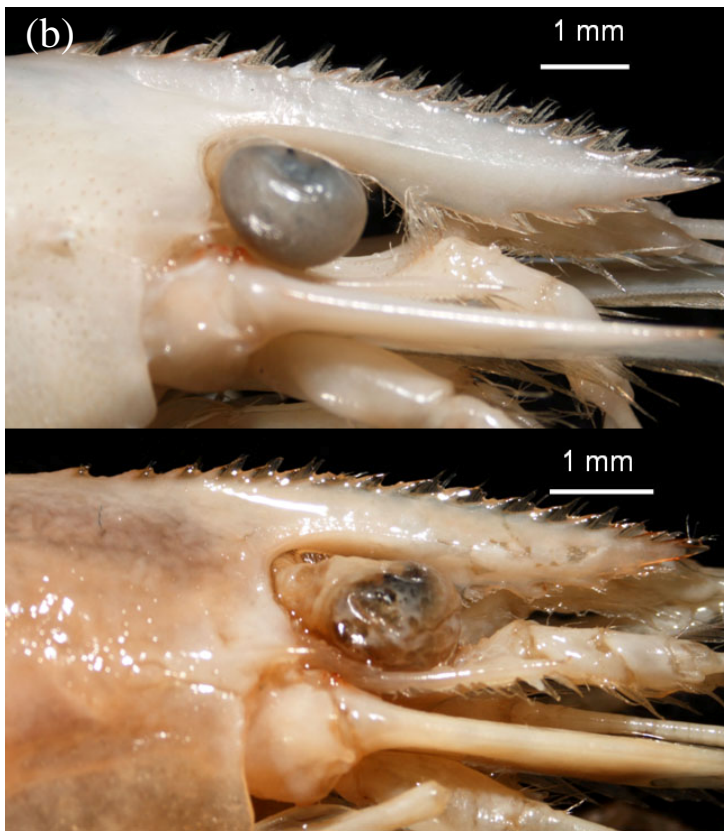
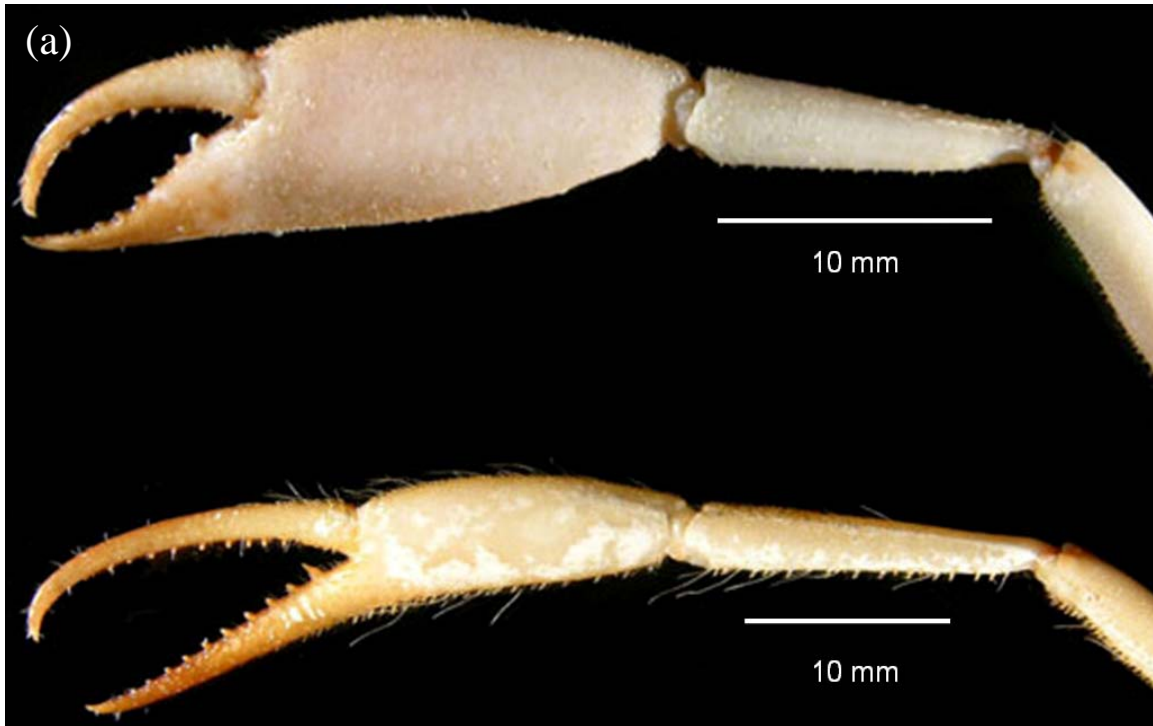


Fig. 4. (a) Major periopod

M. latidactylus (Top) *Macrobrachium* sp.

nov. (bottom) (b) Close-up of Rostrum

M. latidactylus (Top)

Macrobrachium sp. nov. (bottom)

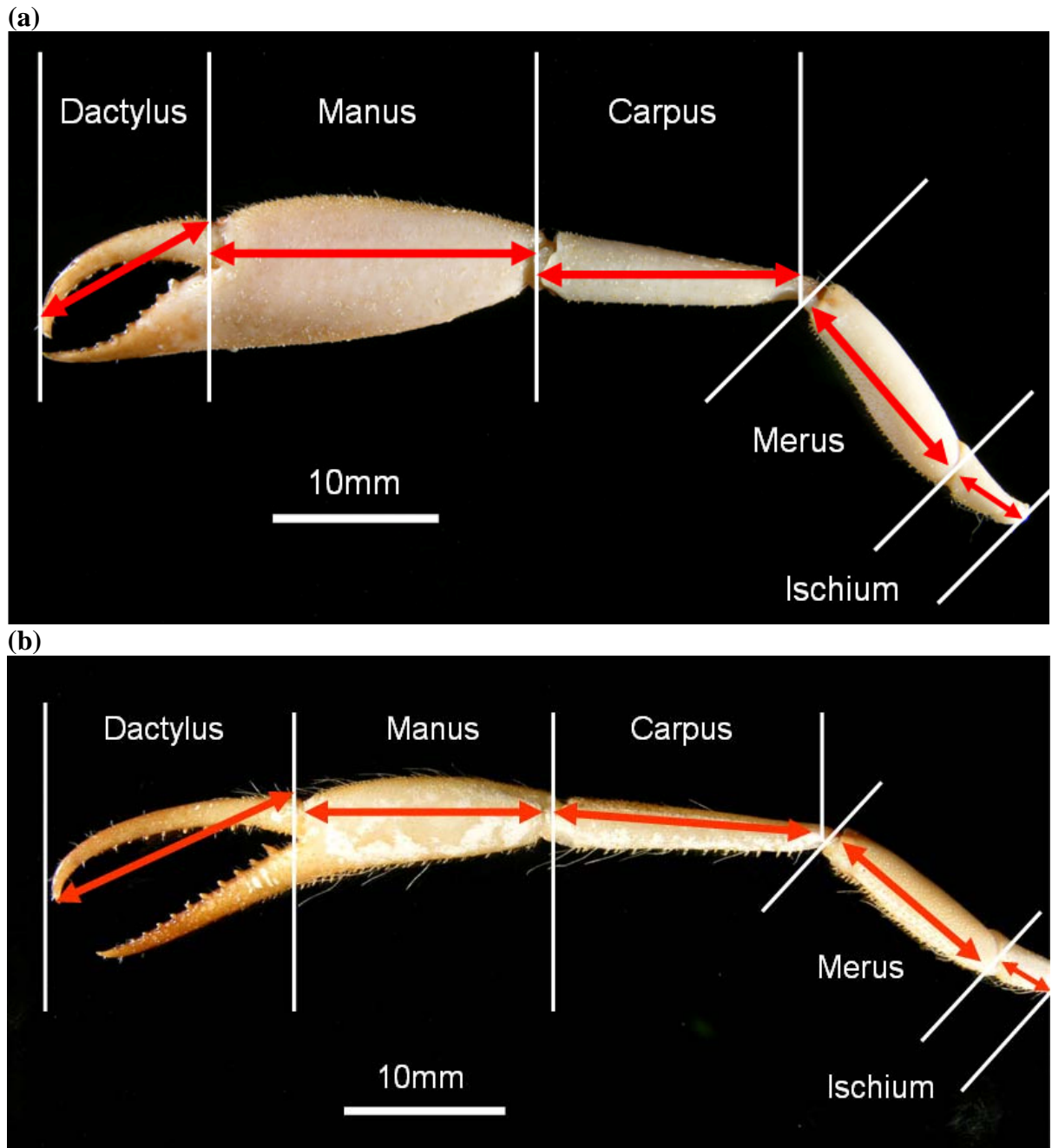


Fig. 5. Measurements taken from major periopod for (a) *M. latidactylus* and (b) *Macrobrachium* sp. nov.

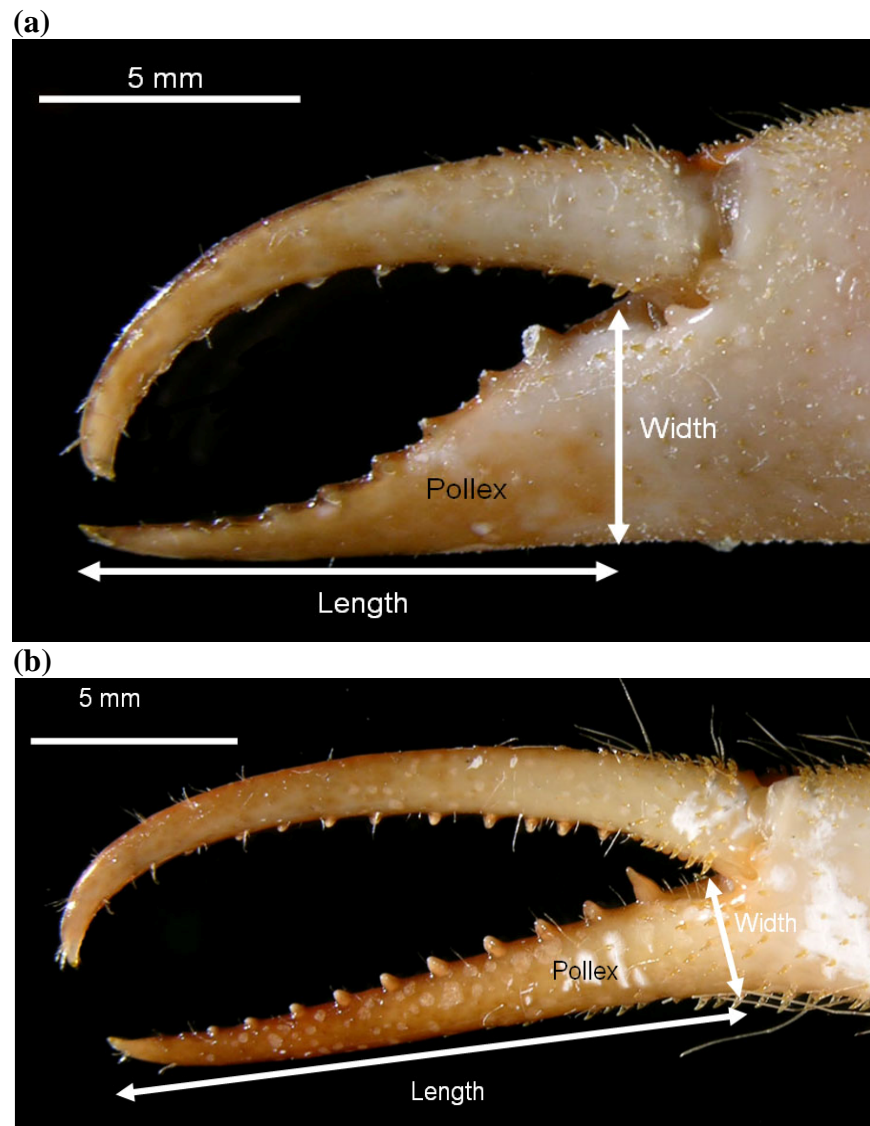


Fig. 6. Measurements taken from pollex for (a) *M. latidactylus* and (b) *Macrobrachium* sp. nov.

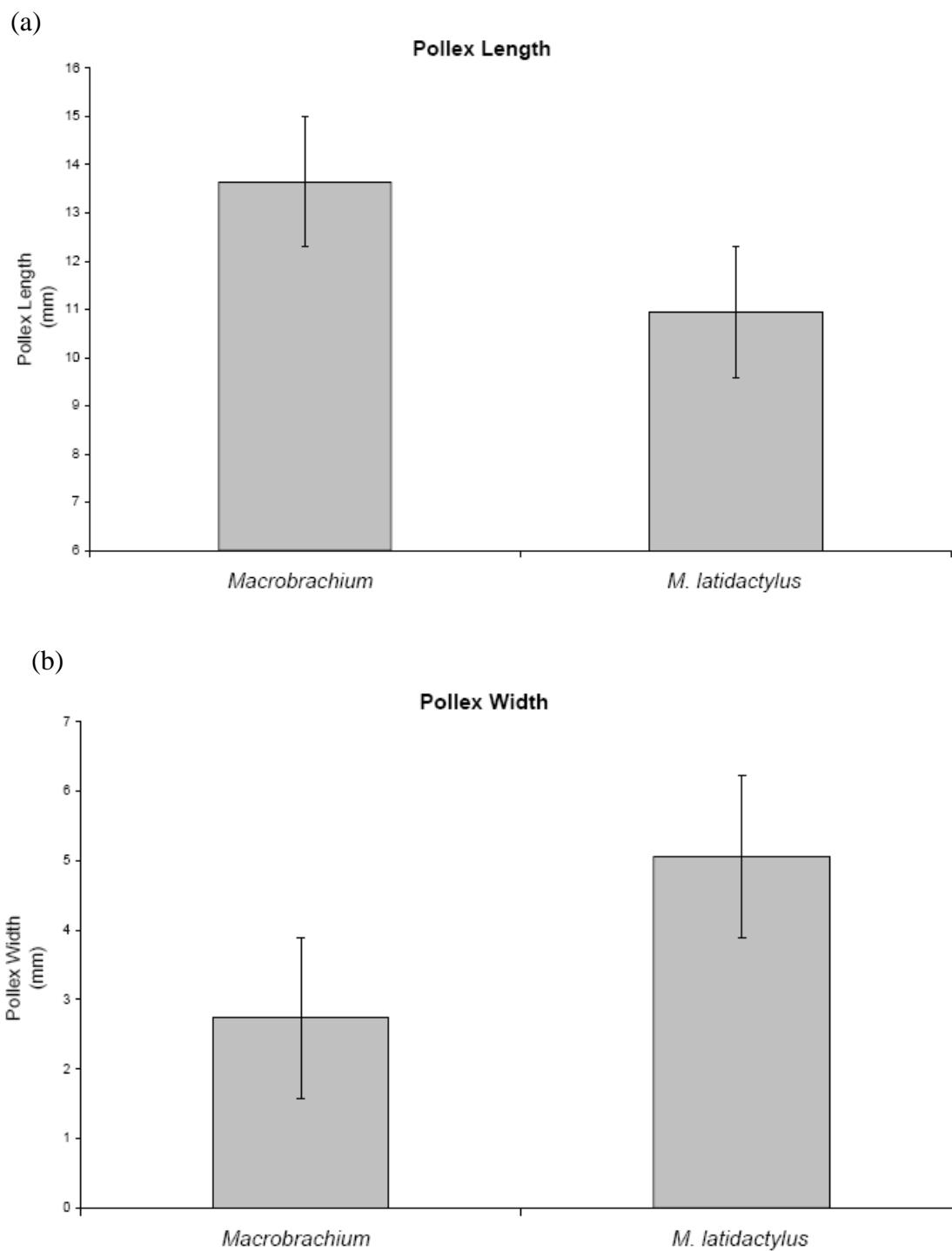


Fig. 7. Bar graphs to show (a) mean pollex width and (b) mean pollex length for 5 individuals of *Macrobrachium* sp. nov. and *M. latidactylus*. Standard error shown.

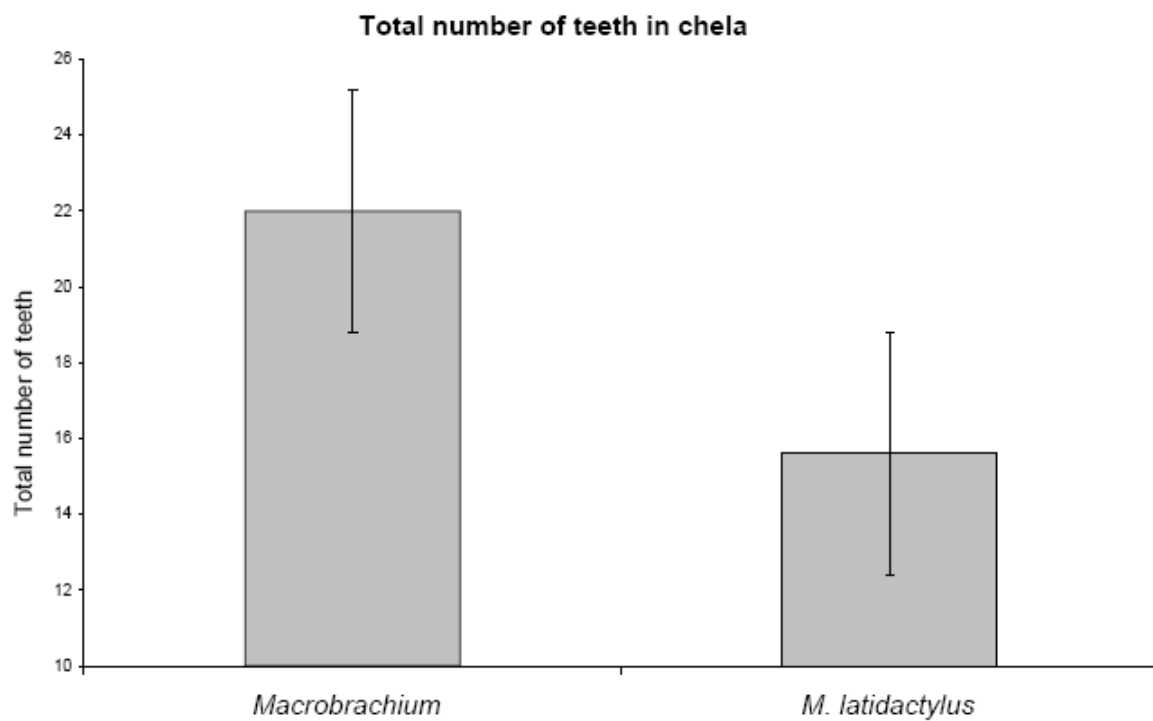


Fig. 8. Bar graph showing mean total no. of teeth in chela of *Macrobrachium* sp. nov. and *M. latidactylus*. Standard error shown.

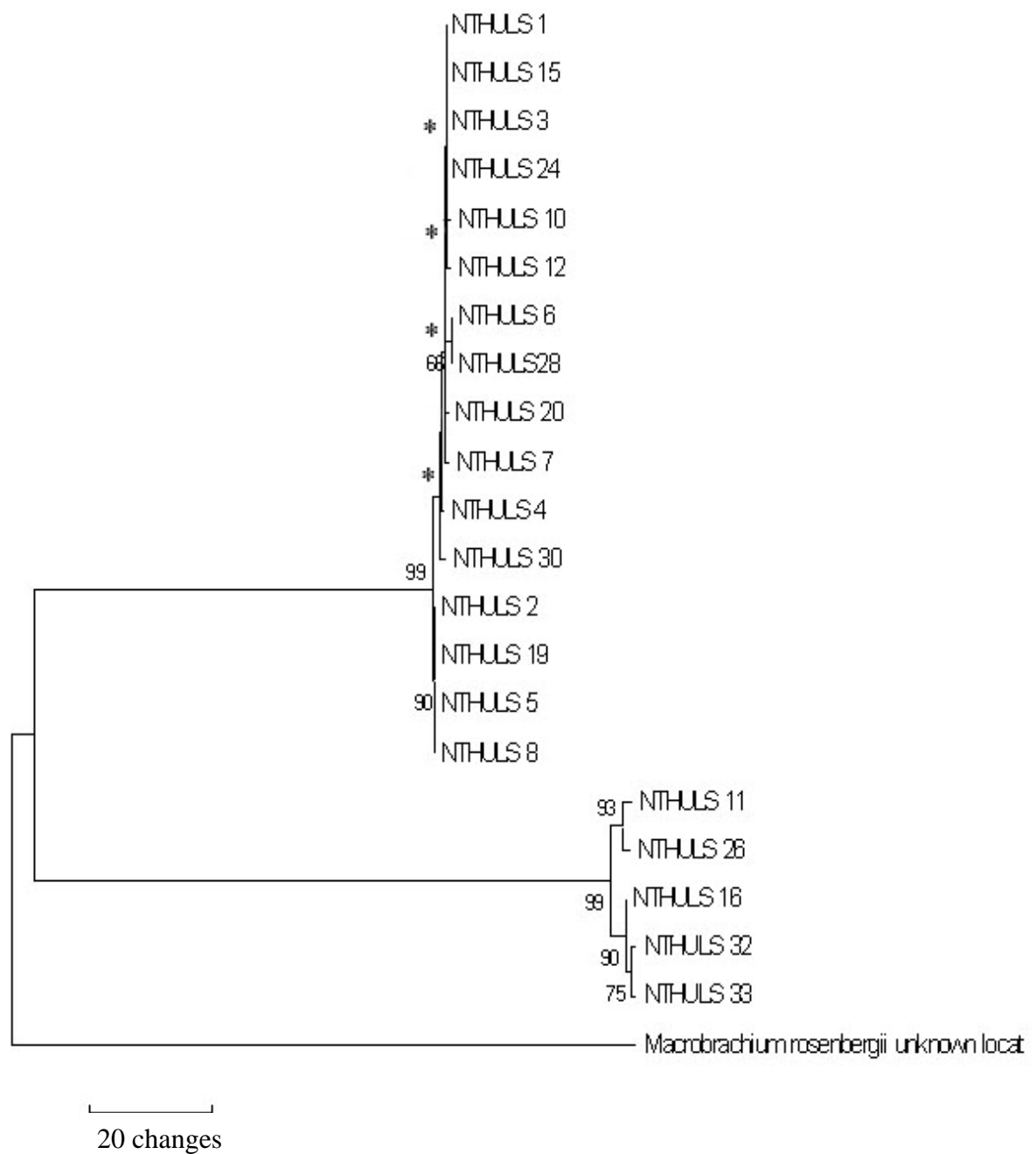


Fig. 9. Neighbor-joining (NJ) tree based on 1120bp COI sequences of experimental samples mtDNA with bootstrap values shown. Astral (*) indicate bootstrap value <50.

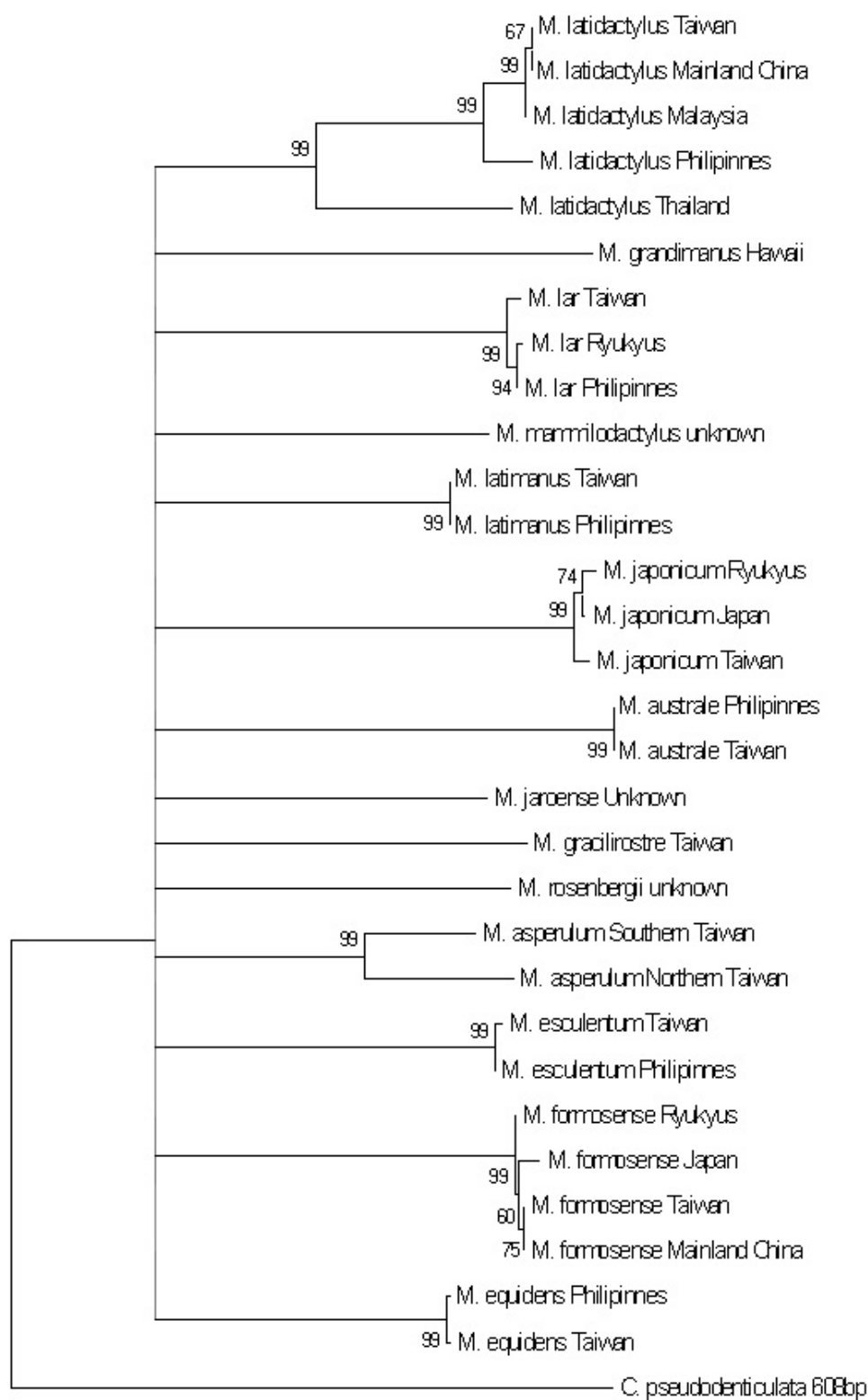


Fig. 10. Neighbor-joining (NJ) tree based on 608bp COI sequences of mtDNA, obtained from GenBank, with bootstrap values shown.

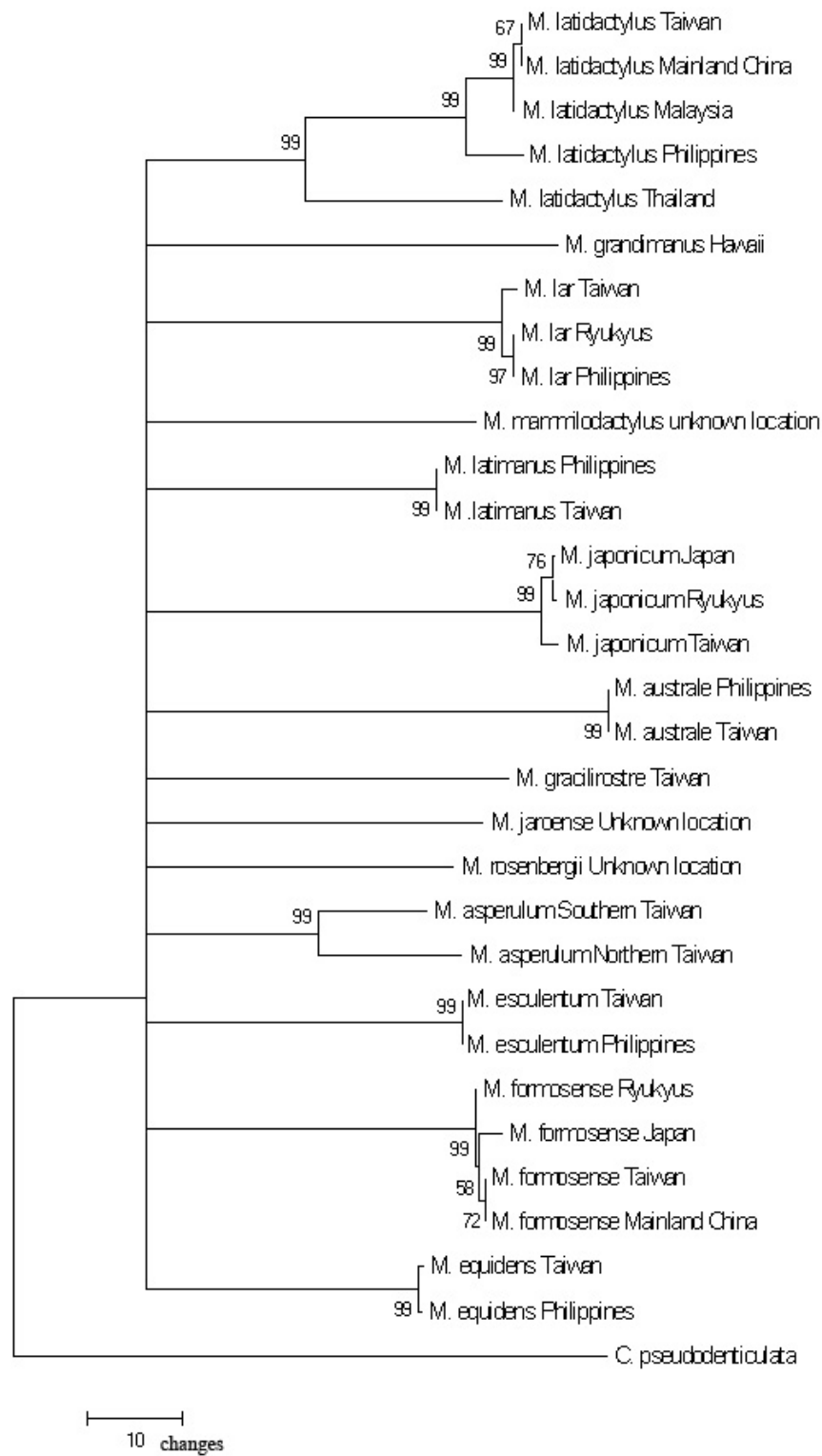


Fig. 11. Neighbor-joining (NJ) tree based on 535bp COI sequences of mtDNA, obtained from GenBank, with bootstrap values shown.

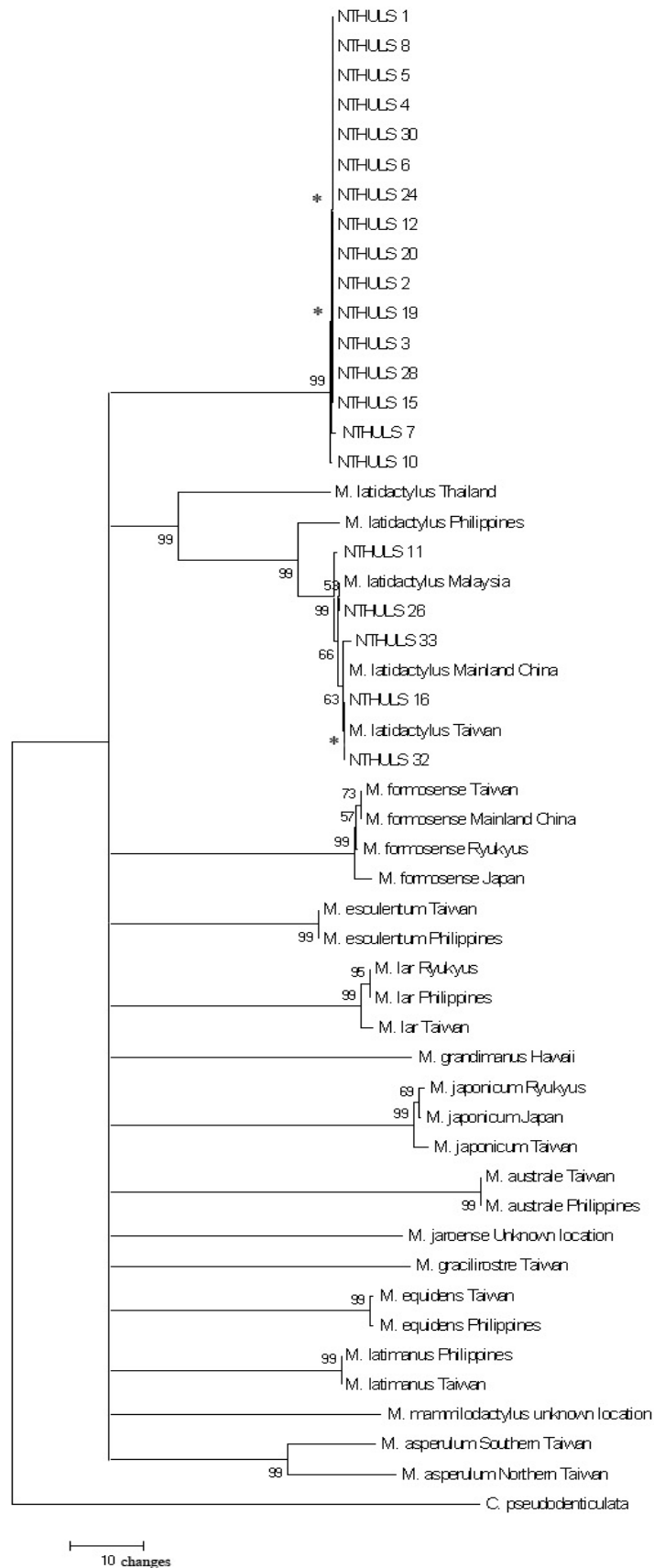
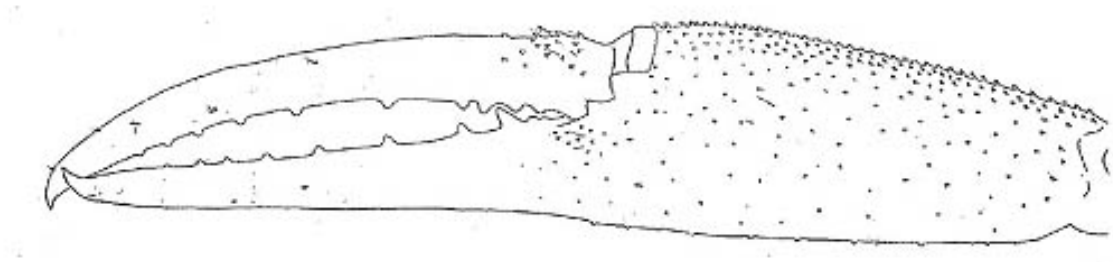


Fig. 12. Neighbor-joining (NJ) tree based on 535bp COI sequences of mtDNA of GenBank and experimental specimens with bootstrap values shown. Astral (*) indicate bootstrap value <50.

a)



b)



Fig. 13. (a) Chela of *Palaemon lampropus* (DeMan, 1892) – invalid species type.

Drawing from the Decapoda of the Sigoba Expedition, Part X (Holthuis, 1950) p242 (g).

(b) Chela of *Macrobrachium* sp. nov.