

Appendix

A

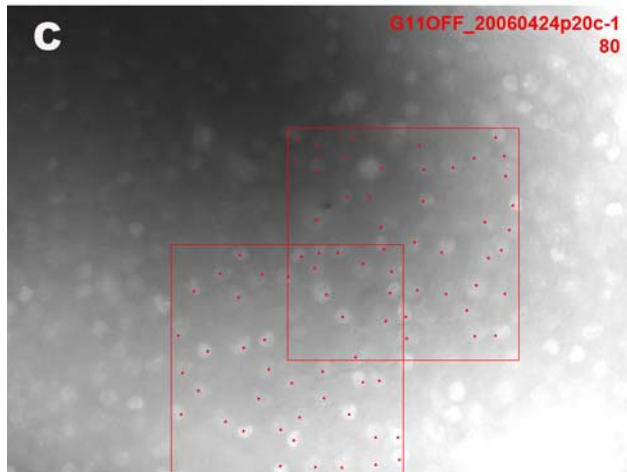
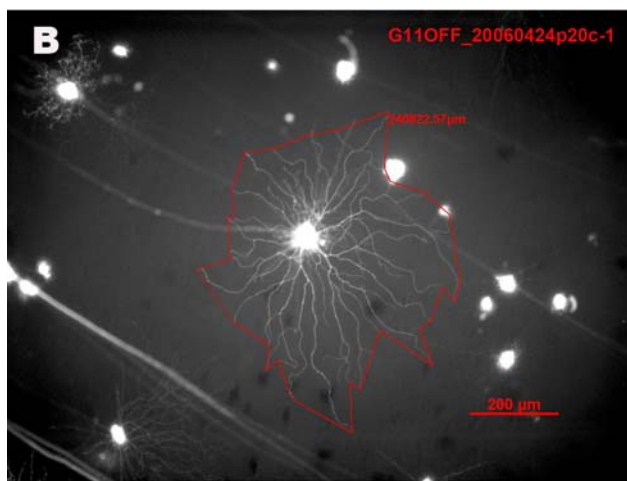
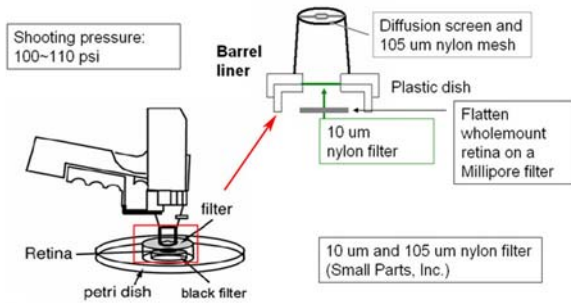


Figure 1. Gene gun shooting setup and measurement of morphological parameters for labeled ganglion cells.

(A) The gene gun setup for shooting. The arrangement of different filters is illustrated at the enlargement of the red square region. (B) The dendritic field of each labeled ganglion

cell was measured via a polygon linking the tips of distal dendrites of ganglion cells in the image viewer (AxioVision LE 4.2; Zeiss). (C) The nucleus density was manually calculated from the selected region (about 0.02 mm²) of the 40X DAPI image for each ganglion cell type.

